



EnergyShield Finishes

COLORS & TEXTURES

Available in 128 standard and custom colors in a variety of textures to complement the design freedom of EnergyShield Wall Systems or to impart the look of stucco on other exterior and interior walls.

PACKAGING

19 litre pail

COVERAGE

Coverage rate may vary depending on the texture porosity of substrate and application techniques.

9-14 m² per pail

Textures:

Fine Finish

Texture Finish

Coarse Finish

Swirl Finish

DESCRIPTION

100% acrylic polymer finishes. High-quality trowel grade textured coating is pre-colored, pre-textured and ready to trowel on directly out of the pail.

USES

- Provides an aesthetically pleasing surface color and texture for EnergyShield Wall Systems.
- Can also be utilized as a textured finish for poured concrete or unit masonry, conventional stucco, and interior veneer plaster or gypsum wallboard.

TECHNICAL INFORMATION

Consult the Gulf Additive Factory Wall Systems Technical Services Department for specific recommendations concerning all other applications.

ADVANTAGES

- 100% acrylic polymer-based chemistry; provides long-term durability and weather resistance
- Integral color; reduces maintenance and recoating
- Weather resistant; repels water and resists wind-driven rain
- Seals existing, non-moving hairline cracks
- Breathable; does not blister, peel or flake
- Abrasion resistant; durable
- Factory mixed; ready to use, no additives to mix
- Water based; safe, non-toxic, clean up easily with soap and water

MIXING

- Mix the contents of the factory-prepared Finish pail with a low-speed drill and paddle mixer until thoroughly blended.
- Additives are not permitted.
- Close container when not in use.
- Clean tools and equipment with water immediately after use.
- Dried material can only be removed mechanically.

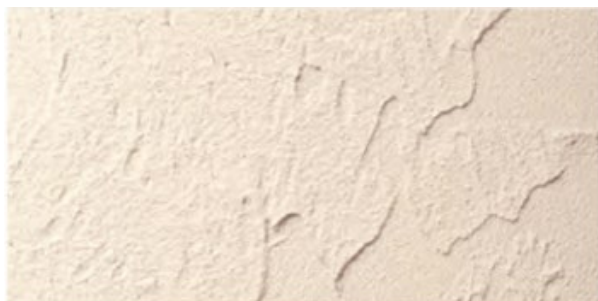


EnergyShield Finishes



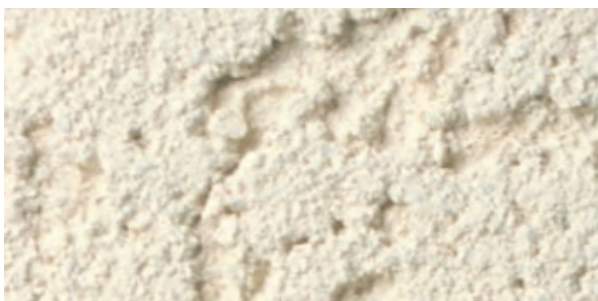
FINE

Factory-mixed, 100% acrylic polymer finish coat. Available in EnergyShield's standard colors and custom colors. Fine Finish utilizes uniformly-sized aggregates for a uniform, fine texture.



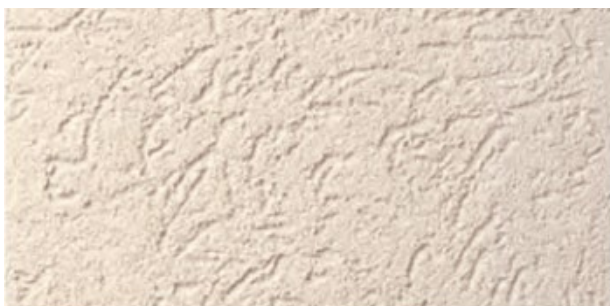
TEXTURE

Factory-mixed, 100% acrylic polymer finish coat. Available in EnergyShield's standard colors and custom colors. Texture Finish can achieve a wide variety of free-formed, textured appearances, including stipple and skip-trowel. Note: If a "smooth" application is required, multiple coats and skillful application techniques will be required.



COARSE

Factory-mixed, 100% acrylic polymer finish coat. Available in EnergyShield's standard colors and custom colors. Coarse Finish has a heavy "worm-holed" appearance which is achieved by the random aggregate sizes in the Finish. The "worm-holed" look can be circular, random, vertical or horizontal.



SWIRL FINISH

Factory-mixed, 100% acrylic polymer finish coat. Available in EnergyShield's standard colors and custom colors. Belgian Lace Finish has a fine "worm-holed" appearance which is achieved by the random aggregate sizes in the finish. The small "worm-holed" look can be circular, random, vertical or horizontal.



EnergyShield Finishes

SURFACE PREPARATION

Substrates must be clean, dry, sound, and free of loose material, releasing agents, paint, efflorescence, contaminants and other coatings. Fill cracks or voids with an appropriate, compatible material to provide a solid substrate prior to application of EnergyShield Finish. Ensure patching material is dry prior to application of EnergyShield Finish.

Note: For color uniformity, ensure patching material is dry prior to application of EnergyShield Finish.

CONCRETE / PLASTER:

- Allow concrete to cure prior to application of EnergyShield Finish.
- Remove all projections, form lines and release agents.
- When needed, apply Gulf Additive Factory Tinted Primer to cured concrete with a sprayer, 10 mm (3/8") nap roller at a rate of approximately 3.6–6.1 m² per liter. Gulf Additive Factory Tinted Primer shall be dry to the touch before proceeding to the EnergyShield Finish application.

APPLICATION

- Apply finish directly to the acceptable substrate with a clean, stainless-steel trowel.
- **Note: In order to minimize the possibility of Base Coat read-through / Opacity, tinted primer coat is recommended**
- Apply and level finish during the same operation to minimum obtainable thickness consistent with uniform coverage.
- Maintain a wet edge on finish by applying and texturing continually over the wall surface.
- Work finish to corners, joints or other natural breaks and do not allow material to set up within an uninterrupted wall area.

- Float finish to achieve final texture.
- Work finish to corners, joints or other natural breaks and do not allow material to set up within an uninterrupted wall area.
- Float finish to achieve final texture.

LIMITATIONS

- Does not bridge moving cracks.
- Must be stored, applied, and protected at least 24 hours after installation and until dry at 4 °C or more. Protect from extreme heat and direct sunlight.
- Protect EnergyShield materials during transportation and installation to avoid physical damage.
- Do not apply EnergyShield materials to frozen surfaces.
- If using a thicker application of Texture Finish, a longer drying period will be required.
- Appearance of Classic might vary if floated by different mechanics.
- Shelf life is two years when unopened and stored as directed.
- **Select Finish Coat color with a light reflective value (LRV) of 20% or higher. The use of dark colors (LRV less than 20%) is not recommended with EIFS that incorporate expanded polystyrene (EPS). EPS has a sustained service temperature limitation of approximately 71 °C.**

HEALTH, SAFETY AND ENVIRONMENTAL

Read, understand, and follow all Safety Data Sheets and product label information for this product prior to use.

GAF-QAT-ES F-04-23-Rev01

STATEMENT OF RESPONSIBILITY: The technical information and application advice given in this GAF publication are based on the present state of our best scientific and practical knowledge. As the information herein is of a general nature, no assumption can be made as to a product's suitability for a particular use or application and no warranty as to its accuracy, reliability or completeness either expressed or implied is given other than those required by law. The user is responsible for checking the suitability of products for their intended use.

NOTE: Field service where provided does not constitute supervisory responsibility. Suggestions made by GAF either orally or in writing may be followed, modified or rejected by the owner, engineer or contractor since they, and not GAF are responsible for carrying out procedures appropriate to a specific application.

Gulf Additive Factory (GAF)
St. 703 Mesaieed Industrial area
P.O. Box: 2050 Doha – Qatar
C.R.No : 102054
Tel : +974 44169957

VISION
INTERNATIONAL MANAGEMENT SERVICE
ISO 9001:2015 ISO 14001:2015
ISO 45001:2018

